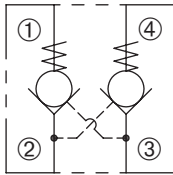


DDPC-080-P

Dual Pilot To Open, Poppet-Type
Check Valve

SERIES 8

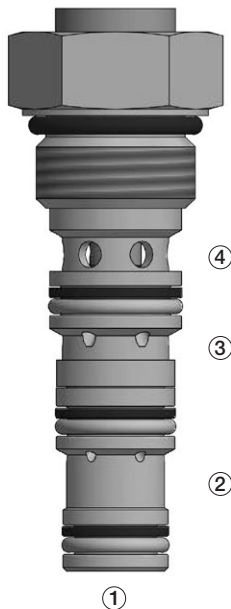


DESCRIPTION

A cartridge valve designed to allow free flow in one direction while preventing flow in the opposite direction. Reverse flow can be achieved by reaching the required pilot pressure. This valve is commonly used as a load-holding or blocking valve.

OPERATION

Pressure at ② or ③ overcomes the spring-bias poppet and allows free flow to ① or ④ respectively. Flow in the opposite direction, from ① to ② or ④ to ③, is blocked by the poppet. When the required pilot pressure is achieved at ②, the poppet unseats and allows flow between ④ and ③. When the required pilot pressure is achieved at ③, the poppet unseats and allows flow between ① and ②. The pilot piston area to poppet seat area ratio is 3:1.



FEATURES and BENEFITS

- Hardened poppet and seat for long life.
- Industry common cavity.

SPECIFICATIONS

Operating Pressure: 4000 PSI (276 Bar)

Flow: See PRESSURE DROP VS. FLOW graph.

Nominal flow 2 gpm (7.6 L/min.)

Internal Leakage: 5 drops/min. max. at 4000 PSI (276 Bar)

Crack Pressure: 25 PSI (1.7 Bar)

Pilot Ratio: 3:1

Temperature: -30°F to +250°F (-35°C to +120°C)

Recommended Filtration: Critical Application – ISO 17/15/13

Non-Critical Application – ISO 20/18/14

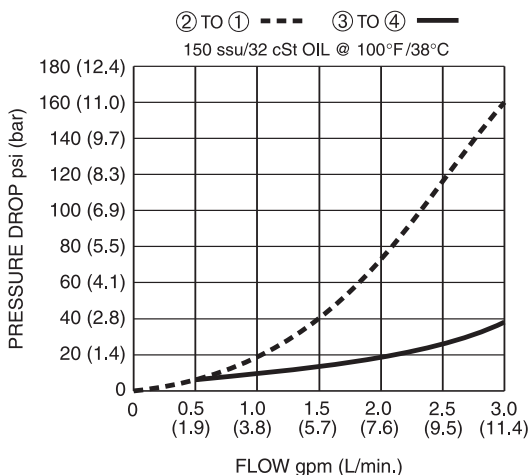
Fluids: Mineral-based fluids.

For other fluid compatibility, consult factory.

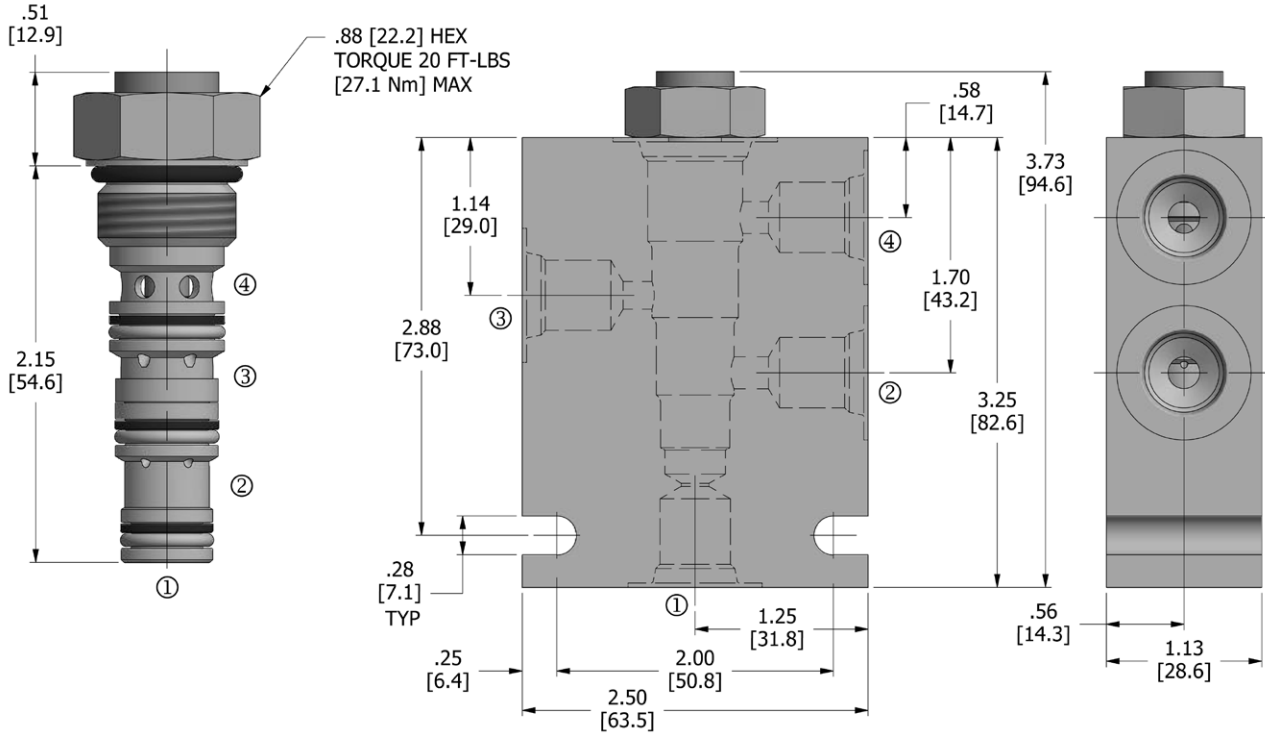
Cavity/Cavity Tool: 080-4, see page 11.08.4

In-Line Body Material: Anodized 6061T6 aluminum alloy rated at 3000 PSI (207 Bar).

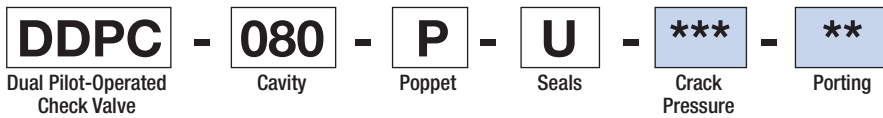
PRESSURE DROP VS. FLOW



DIMENSIONS Inches [Millimeters]



HOW TO ORDER



Seals		Seal Kit
U	Urethane	DSK-080-34-U-A

Crack Pressure	
025	25 psi (1.7 Bar)

Porting [†]		In-Line Body w/o Cartridge
omit	Cartridge only	
2N	1/4 PTF	B-080-4-2N
3N	3/8 PTF	B-080-4-3N
4T	SAE 4	B-080-4-4T
6T	SAE 6	B-080-4-6T

[†] Other options available – consult factory

All variations may not be configurable. Minimum order quantities may be required on other models. Contact Deltrol Fluid Products for complete details.